

Instructions for the universal smartphone adapter HEINE DELTAone and DELTA 30.

Digital dermatoscopic documentation using a smartphone camera.

IT'S JUST THAT EASY!

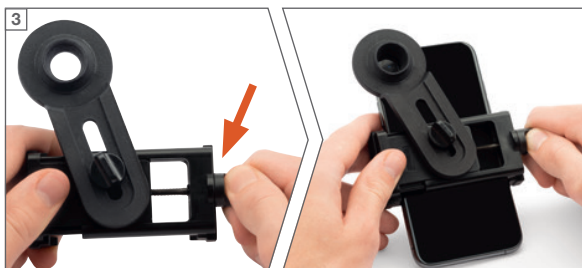


You can use almost any smartphone with the HEINE universal smartphone adapter, regardless of operating system (Android, Windows, etc.).

HEINE has phone cases in its product range that fit many iPhone* models, where the adaptor is already permanently attached to the HEINE phone case. You can find more information at www.heine.com



You need a DELTA 30 or DELTAone, a smartphone and the appropriate adapter (for DELTA 30 or DELTAone).



Turn the toggle screw to adjust the adapter's holder to the width of your smartphone. Place the holder approximately in the centre of the back of your smartphone and fix it in place using the same toggle screw.



Then place the adapter in front of the smartphone camera: To do this, loosen the adapter's toggle screw until it can be easily swivelled sideways and moved back and forth.

If your smartphone has just one camera, fix the adapter over the centre of this camera by tightening the toggle screw in the centre.

If your smartphone has multiple cameras, first determine which of the cameras is the main camera: Position the adapter so that one of your smartphone's camera lenses is in the centre. Is the field of view on the screen clear in the camera view? If everything looks correct, affix the adapter over this camera.



The magnet on the adapter now keeps the smartphone in position on the focusing ring of the dermatoscope.

You can now use the camera function on your smartphone as normal to take photos.

Are you looking for a digital documentation solution?
You can find relevant information at:
www.heine.com/en/digital-documentation-derm

*Apple, the Apple logo, iPhone and iPad are trademarks of Apple Inc., registered in the U.S. and other countries.
We reserve the right to change specification without notice. © 2022 HEINE Optotechnik GmbH & Co. KG. All rights reserved.

